

Pre-shipment Inspection



Report No.	:	XXX	Re - Inspection
Client Name	:	XXX	
Order / P.O / P.I No.	:	/	
Product Description	:	BACKACCESS PROFESSIONAL BACKPACK	
Product Item / Part No.	:	ZEZNIA 1600AW	
Product Quantity	:	1000PCS	
Supplier Name	:	XXX	
Inspection Date	:	2016-06-27	
Inspection Location	:	Guangdong ,China	

WORKMANSHIP INSPECTION PLAN AND DEFECTS QTY

Inspection Standard: ANSI/ASQC Z 1.4-2003			AQL Standard		Allow Defects QTY	Actual Defects QTY
Sampling Plan	:	Single Normal	Critical	:	0	0
Inspection Level	:	GII	Major	:	1.5	1
Total Sample Size	:	64	Minor	:	4.0	5

INSPECTION DETAILS RESULT

1)	QUANTITY	:	Not Conform, Refer to Special Attentions:2
2)	WORKMANSHIP	:	Conform
3)	ARTWORKS	:	Conform
4)	PACKAGING	:	Not Conform, Refer to Special Attentions:1
5)	SHIPPING MARK	:	Conform
6)	TESTING / DATA MEASUREMENT	:	Conform

INSPECTION OVERALL CONCLUSION	:	ACCEPTED	PENDING	FAILED	X
-------------------------------	---	----------	---------	--------	---

SPECIAL ATTENTION

1	The shipping mark is different from actual. Refer Pic. A-B
2	Only has 320pcs product was finished packed.

Name(s) of Inspector(s)			Name of Reviewer		
2016-06-27	Simon		2016-06-28	Chuck Shi	Chuck shi
Date	Name	Signature	Date	Name	Signature

The inspection report reflects our findings at the time and place of inspection. This report does not relieve the seller/manufacturer of their contractual liabilities or prejudice from the buyer's right for compensation for any apparent and/or hidden defects not detected during our random inspection or occurring thereafter.

Page 1 of 30					
HONOR INSPECTION INTERNATIONAL LTD. NINGBO REPRESENTATIVE OFFICE.		Rm.604,10th,Building,RongAnHeYuan No.306,SongJiangDong-Road,YinZhou Distric,NingBo City,China.		Tel: +86-574-88197698 Fax: +86-574-88197638-8	
				Email: report@honorinspection.com Web: www.honorinspection.com Report Version:20150606	

Special Attention Refer Photos

Pic. A , shipping mark:45*20*23.5



Pic. B , Actual size:48*36*64.5CM



Pic. C , Actual size:48*36*64.5CM



Pic. D , Actual size:48*36*64.5CM



RANDOM SAMPLING PLAN FOR EACH ITEM

1) QUANTITY							
Result:		Not Conform, Refer to Special Attentions:2					
No.	Item / Part No.	Order Quantity	Packed Quantity	Not packed Quantity	Not finished Quantity	Sampling Size	
						Packed Quantity	Not packed QTY
1	ZEZNIA 1600AW	1000pcs	320pcs	680pcs	0	64pcs	0
Total		1000pcs	320pcs	680pcs	0	64pcs	0

Data Red color marked was/were found out of specification.

The inspection details were found as follows:

2) WORKMANSHIP

Result: Conform

Defects Description		Critical	Major	Minor
Item No.:	ZEZNIA 1600AW	Defects QTY		
Missing small bag (Pls. see Pic.1)			1	
Untrimmed thread end (Pls. see Pic.3-6)				4
Poor sewing inside(Pls. see Pic.2)				1
Individual Total Found:			1	5

Total Defects Found:	0	1	5
AQL Standard Allowed:	0	3	7

Appearance Defects Refer Photos

Pic.1 Missing small bag



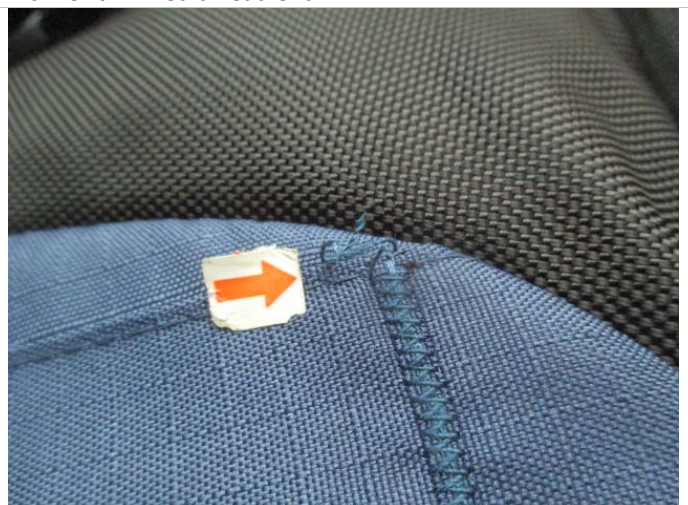
Pic.2 Poor sewing



Pic.3 Untrimmed thread end



Pic.4 Untrimmed thread end



Pic.5 Untrimmed thread end

Pic.6 Untrimmed thread end



3) ARTWORKS

Result: Conform

Markings/ logos/ labels on the product

Conform

Color of product

Conform

Barcode/ QR code

Conform

Others-

Barcode Readability Check:

(10 Samples) Conform

Item No	Specification	Actual	Item No	Specification	Actual
N/A	722703620001	722703620001			

Data Red color marked was/were found out of specification.

4) PACKAGING

Result: Conform

Item No	Accessories	Unit Packing	Unit per Carton
ZEZNIA 1600AW	Hang tag	1 unit	4 unit

Data Red color marked was/were found out of specification.

Dimension of carton (LxWxH cm) N/A

(1 Samples) Not Conform

Item No	Specification	Actual	Item No	Specification	Actual
ZEZNIA 1600AW	45*20*32.5	48*36*64.5			

Data Red color marked was/were found out of specification.

Weight of carton (Kgs) N/A

(1 Samples) Conform

Item No	Specification	Actual	Item No	/	Actual
ZEZNIA 1600AW	8	8.17			

Data Red color marked was/were found out of specification.

5) SHIPPING MARK

Result: Conform

Main marking

Side marking



6) TESTING / DATA MEASUREMENT

Result: Conform

1.5KG Loading test -Side pockets	(5 Samples)	Conform
18KG Loading test -4H	(5 Samples)	Conform
Dimension check	(5 Samples)	Conform
Rubbing test	(5 Samples)	Conform
Function test-used	(5 Samples)	Conform
Waterproof test	(5 Samples)	Conform
Zipper test	(5 Samples)	Conform
Buckle test	(5 Samples)	Conform
Drop test on outer carton (H=76 cm)	(1 Carton)	Conform
Drop test on product (H=80 cm)	(1 sample)	Conform

PRODUCT REFER PHOTOS

Ware house view



Ware house view



Ware house view



Ware house view



Carton view



Actual shipping mark

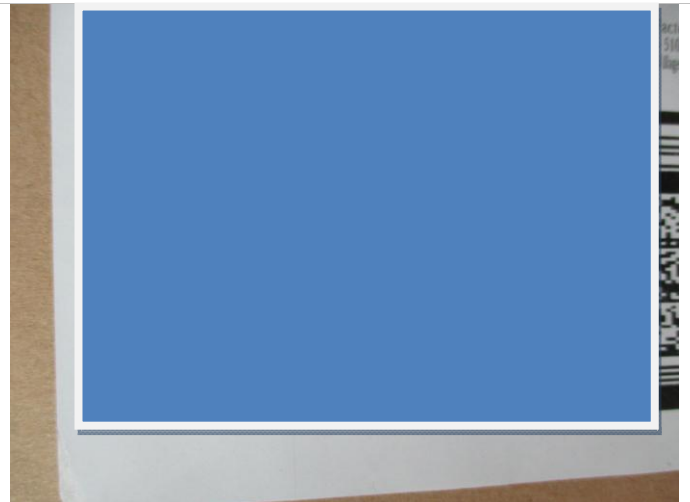


Label on carton-GTBFU

Label on carton-GTBFU



Actual shipping mark



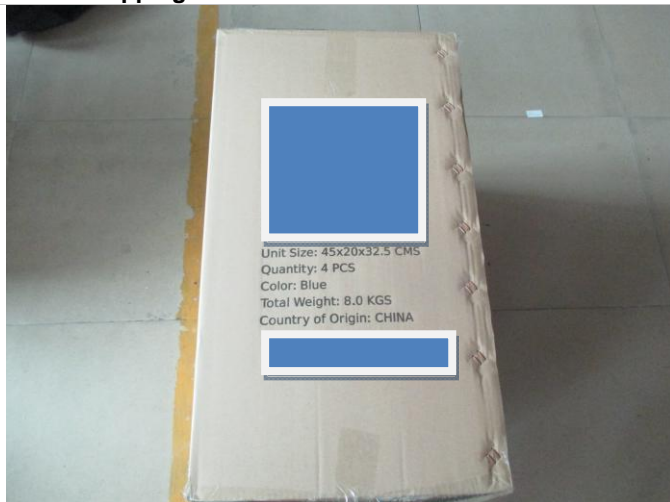
Actual shipping mark



Actual shipping mark



Open carton view



5-ply carton



Open carton view



Open carton view



4pcs per carton



Unit packing



Unit packing



Unit packing



Poly bag



Warnings on polybag



Air hole on polybag



Label on poly bag



Product view



Product view



Product view



Product view



Product view



Product view



Product view



Product detail view



Product detail view



Product detail view



Product detail view



Product detail view



Product detail view



Product detail view



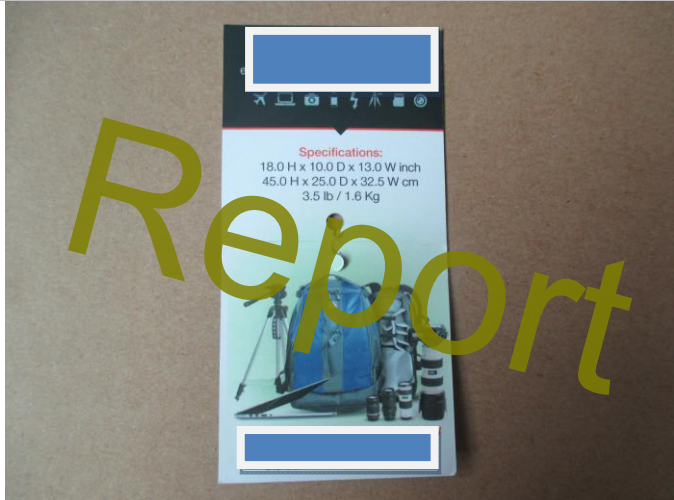
Product detail view



Hang tag



Hang tag



Hang tag



Product detail view



Product detail view



Product detail view



Product detail view



Product detail view



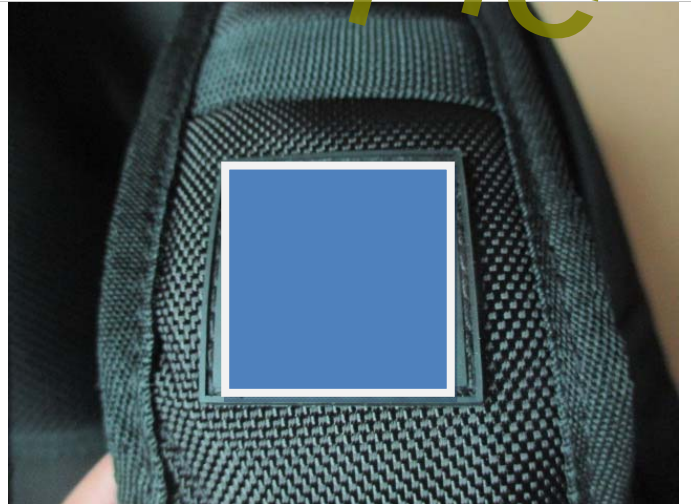
Product detail view



Product detail view



Product detail view



Product detail view



Product view



Product view



Product view



Product view



Product detail view



Product detail view



Product detail view



Product detail view



Product detail view



Product detail view



Product detail view



Product detail view



Product detail view



Product detail view



Product detail view



Product detail view



Product detail view



Product detail view



Product detail view



Product detail view



Product detail view



Product detail view



Product detail view



Product detail view



Product detail view



Product detail view



Product detail view



Product detail view



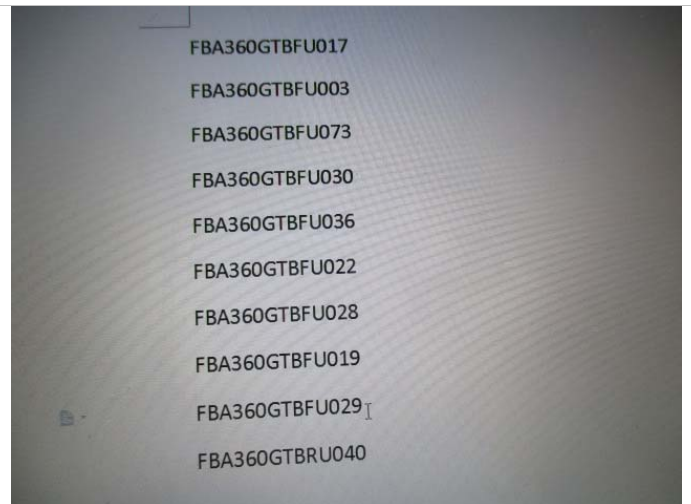
Barcode scan test



Barcode scan test



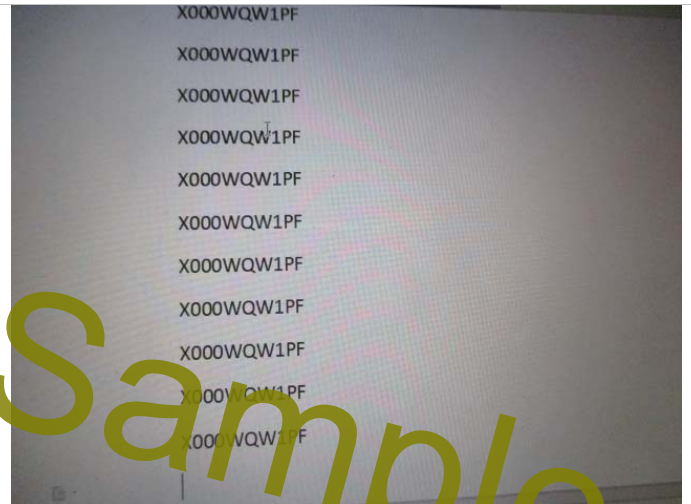
Barcode scan test



Barcode scan test



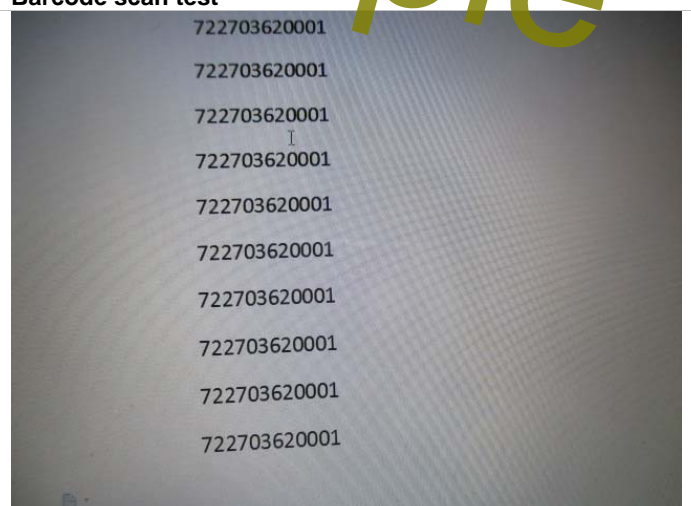
Barcode scan test



Barcode scan test



Loading test



Loading test



Loading test



Loading test



Loading test



Loading test



Loading test



Loading test



Product detail view



Zipper test



Zipper test



Zipper test



Buckle test



Buckle test



Waterproof test



Waterproof test



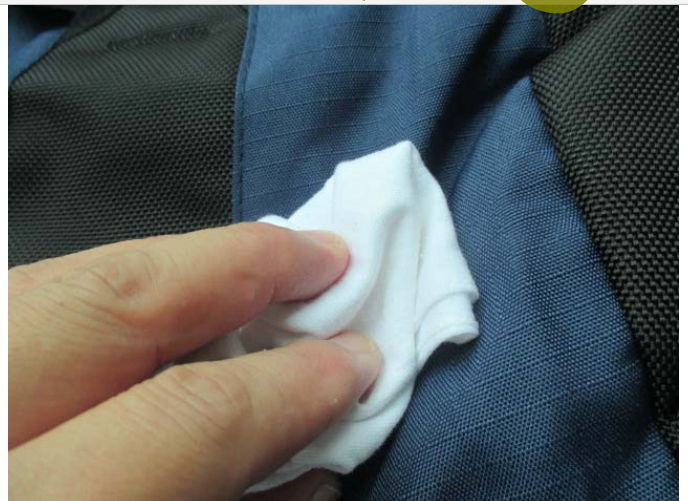
Waterproof test



Rubbing test



Rubbing test



Rubbing test



Drop test-carton



Drop test-carton



Drop test-product

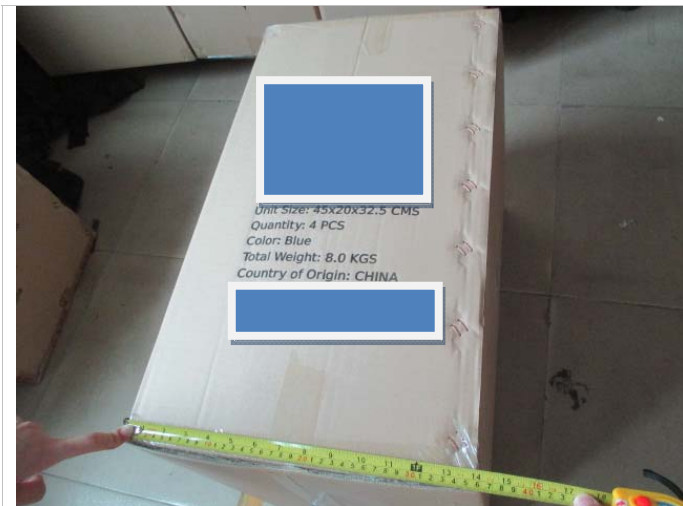


Drop test-product



Measure check





Report Sample







Report Sample





-This is end of Report-

Report Sample